



# WELCOME TO SSE!

The Stockholm School of Economics (SSE) is ranked as the best business school in the Nordic and Baltic countries. SSE educates talented students for leading positions in the business community, politics, NGOs and the public sector, and has done so since 1909. Our School has earned a reputation for excellence, both in Sweden and around the world.

## A SMALL SCHOOL WITH A BIG IMPACT

SSE is relatively small, with only about 2,000 students, which creates close ties between students, faculty and staff. Classes are small and faculty are highly accessible. Teaching includes interactive case studies. The more real things get, the more you learn.

## GRADUATES MAKING A DIFFERENCE



SSE graduates make a difference. Of the top 30 Swedish companies on the OMX Stockholm 93% have at least one SSE alum on their Board of Directors or Executive Management team.

## VALUABLE CONNECTIONS



96%

We work in close cooperation with the business community, which make a strong impact on the education. Real problems and solutions are used in class, and we make sure our students get what the employers are looking for. Our more than 100 corporate partners provide plenty of opportunities to make valuable connections from day one. We also house the SSE Business Lab, a world-class business incubator. The MSc Employment Report 2023 shows that 96% of SSE's graduates from the MSc programs are employed within three months of graduation.

## INTERNATIONAL TOP SCHOOL

We are an international school based in central Stockholm, known as one of the world's most beautiful cities with a bustling start-up scene. Many of our students and staff have an international background.

## PARTNERS AND MEMBERSHIPS



APPSIA



CIVICA  
THE EUROPEAN UNIVERSITY OF  
SOCIAL SCIENCES

GLOBAL NETWORK FOR  
ADVANCED MANAGEMENT



PRME

We collaborate with top schools all over the world, are members of the prestigious CEMS network, and are accredited by EQUIS (European Quality Improvement System), which means that all programs and research are regarded to be of the highest international standard. We also offer double degree possibilities with prominent partner universities in Italy, France and Switzerland.

RANKING

## FINANCIAL TIMES RANKING

For the past 20 years, SSE has been ranked as the number one business school in the Nordic and Baltic countries by the Financial Times.

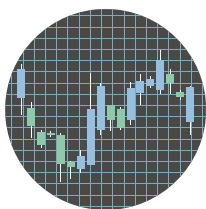




## PROGRAMS

SSE is a program-based institution that admits students exclusively to 11 degree programs, including an Executive MBA. All programs are taught exclusively in English. In addition, SSE Executive Education offers open, customized, and online programs.

DEGREES	<b>BACHELOR PROGRAMS</b> 3 years – 180 ECTS	BSc in Business & Economics
		BSc in Retail Management
	<b>MASTER PROGRAMS</b> 2 years – 120 ECTS	MSc in International Business
		MSc in Business & Management
		MSc in Economics
		MSc in Finance (Specializations in Corporate Finance and Investment Management)
		MSc in Accounting, Valuation & Financial Management
	<b>PHD PROGRAMS</b> 5 years – 240 ECTS	PhD in Business Administration
		PhD in Economics
		PhD in Finance
	<b>MBA</b>	SSE MBA Executive Format
<b>EXECUTIVE EDUCATION</b>	Open programs	
	Customized and consortium programs	



## RESEARCH

SSE is known for linking research with education. Our research is internationally renowned, and many of our researchers are among the leading figures in their field.

We conduct research in economics, finance, business administration and related disciplines.

## FACTS AND FIGURES

**Number of students:** About 2,000 full time equivalents (including PhD students).

**Number of employees:** About 270.

**Number of core faculty:** About 150.

**6 core research departments:** Department of Accounting, Department of Economics, Department of Entrepreneurship, Innovation and Technology, Department of Finance, Department of Management and Organization and the Department of Marketing and Strategy.

**5 specialized research environments:** Finance, Retail, Innovation, Sustainability and Governance.

**Partners and memberships:** 100 partner universities, member of APSIA, CEMS, PIM, PRME, CIVICA and GNAM.

**Corporate partners:** More than 100 partner companies in the Corporate Partnership Program.

**A private business school** that receives its funding from private sources. Approximately 20% of the funding comes from the Swedish government.

**Founded by the business community** more than a hundred years ago, in 1909.

## CONTACT US

For questions about the programs, requirements or admissions, please contact the MSc admissions team at: [msc.admissions@hhs.se](mailto:msc.admissions@hhs.se) or telephone +46 (0)8 736 90 00. More information can be found on [www.hhs.se/msc](http://www.hhs.se/msc)