

# MSc

MASTER OF SCIENCE PROGRAMS

## EMPLOYMENT REPORT 2023



# INTRODUCTION

When I graduated from the Stockholm School of Economics (SSE) in 2013, Instagram had 110 million users, while in 2022, it had more than two billion users. This embodies the rapid pace of change we are experiencing right now. During my three years working for the Alibaba Group, one of the largest tech companies in the world, I repeatedly heard the guiding principle “change is the only constant”. Looking at the world today, this is the reality we will all be facing. The only thing we know about tomorrow is that it will be entirely different from today, and that the pace of change is accelerating as never before. This environment puts high requirements on leaders. To succeed, you have to be curious and embrace novelties, but don’t be fooled by empty promises. As a leader, you will need to guide teams through a fragile world, where a new technology might upend the status quo at any time. This increased uncertainty requires authentic leadership and a high level of empathy as the need of direction increases with it.

I started my Bachelor’s degree at SSE in 2008 and later graduated with a Master’s degree from SSE and a CEMS Master in International Management in 2013. Today, I work as the Online Director at Åhléns, the largest department store in Sweden. My years at SSE and in its student association were highly formative, providing a solid foundation in business understanding and analytical skills. More importantly, the people at SSE – both fellow students, alumni and teachers – taught me many lessons outside of the books, such as the value of friendships and teamwork, humility and work ethics. Lessons that have proved invaluable.

If asked what the most striking characteristics of an SSE graduate are, I would say drive, relentlessness, and curiosity; all important qualities to succeed and thrive in this ever-changing world.



**Jenny Zeng**  
Online Director at Åhléns

# GRADUATE PROFILE

In the spring of 2023, 317 alumni who graduated from SSE's Master programs in 2022 were surveyed about their whereabouts, employment situation, and remuneration. They included 40 percent women and 60 percent men. The median age at graduation was 26. Thirty-eight nationalities were represented, including Swedish (some of these were Swedish alumni with double citizenships).



## NATIONALITIES REPRESENTED IN THE MASTER COHORT THAT GRADUATED IN 2022

Algerian, American, Australian, Austrian, Bangladeshi, Barbadian, British, Canadian, Chilean, Chinese, Czech, Finnish, French, German, Greek, Hungarian, Icelandic, Indian, Indonesian, Irish, Italian, Latvian, Moldovan, Dutch, Norwegian, Polish, Portuguese, Romanian, Russian, Slovakian, South Korean, Spanish, Swedish, Swiss, Syrian, Turkish, Venezuelan, Zimbabwean

Of the invited alumni, 264 responded to the survey. Their answers are summarized on the following pages. Note that not every respondent completed every question. To calculate the percentages, we used the number of usable responses to each question as the total. Likewise, when we refer to "alumni" on the following pages, we refer to the group of alumni who answered the relevant survey question and not the entire cohort that graduated in 2022.

Information on company sectors was reviewed by the project team and standardized based on the Financial Times grouping.

# GRADUATES WERE HIRED QUICKLY

Of the alumni who told us that they went straight to work and disclosed their time to employment, 96 percent found employment within three months of completing their studies. The remaining 4 percent include alumni who chose not to look for a job immediately after graduation.

# 96%

96 percent found employment within three months of completing their studies.

Of those who found employment within three months of completing their studies, 93 percent found positions before they completed their studies.

## ANNUAL REMUNERATION

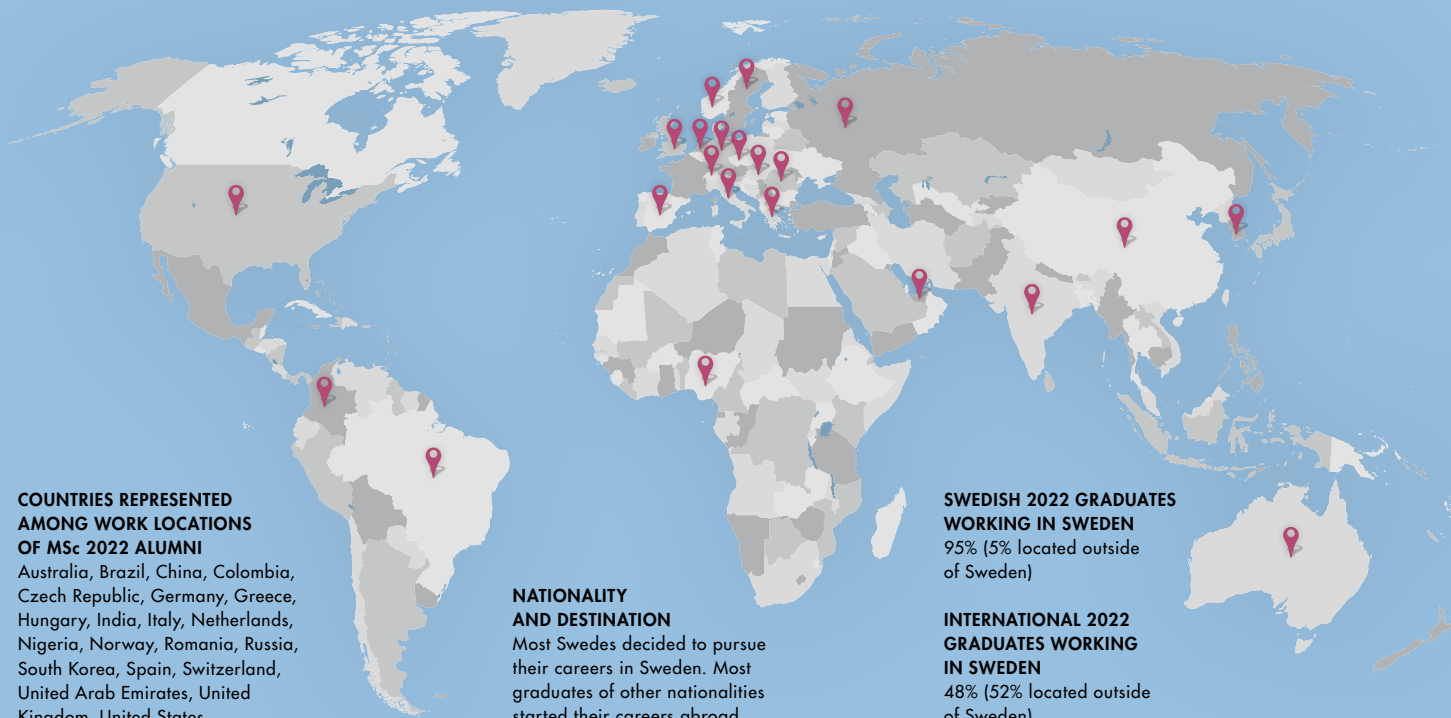
One year after completing their studies, employed alumni\* earned an average annual gross remuneration of USD 61,139 or SEK 660,271. This figure includes bonuses and commissions.



\*Salary information was reported by alumni in USD. USD was converted to SEK at the Riksbank's exchange rate on June 1, 2023; USD 1 = SEK 10.7995. Outliers were excluded from this analysis.

# ALUMNI WORKING ALL OVER THE WORLD

Sweden, Germany, United Kingdom, and Switzerland were the most popular employment destinations. While 5% of Swedish alumni are working outside of Sweden, 48% of non-Swedish alumni are employed in Sweden.



## COUNTRIES REPRESENTED AMONG WORK LOCATIONS OF MSc 2022 ALUMNI

Australia, Brazil, China, Colombia, Czech Republic, Germany, Greece, Hungary, India, Italy, Netherlands, Nigeria, Norway, Romania, Russia, South Korea, Spain, Switzerland, United Arab Emirates, United Kingdom, United States

## NATIONALITY AND DESTINATION

Most Swedes decided to pursue their careers in Sweden. Most graduates of other nationalities started their careers abroad.

## SWEDISH 2022 GRADUATES WORKING IN SWEDEN

95% (5% located outside of Sweden)

## INTERNATIONAL 2022 GRADUATES WORKING IN SWEDEN

48% (52% located outside of Sweden)

# SSE'S MSc MENTORSHIP PROGRAM

The SSE Mentorship Program is a unique program that helps our Master students with the transition to professional life by connecting them with SSE alumni and SSE corporate partners. Every year, the program pairs students with mentors who are thriving in their fields, giving their time and sharing their experiences to inspire the next generation of leaders. The program spans one academic year, during which students and mentors work together to explore career paths, share insights into workplace culture, and build the students' professional networks.

95

of our 2022 MSc graduates who participated in the survey also took part in the MSc Mentorship Program.



# WHAT OUR MENTORS THINK ABOUT THE MSc MENTORSHIP PROGRAM

"My main reason for joining the MSc Mentorship program is that I wanted to give back to the school, since my degree from SSE was fundamental in starting my career. I have been a mentor for three years now, and it has been an enriching experience. I really enjoy providing guidance to students and reassuring them about life after graduation. The MSc Mentorship Program has been an excellent occasion to reflect on my own journey, as well as developing coaching skills that are valuable also in my own career."

**Pamela Cominetti**

Mentor

E-commerce Operations & Client Service Senior Manager, Versace



"A mentorship is not hand holding but rather a process where the mentee learns to use and grow their own capabilities and expand their knowledge, which helps getting them where they want to go. During the mentorship process, I learnt to introspect a lot more about myself, my area of expertise, and on how to share my knowledge with others in the best possible way."

**Rupin Jeremiah**

Mentor

Founder of Green Zero



# **MSc ALUMNI WHO WENT ON EXCHANGE**

SSE runs an extensive student exchange program with about 100 top ranked universities and business schools all around the world. SSE is also a member of the two prominent networks, PIM (Partnership in International Management) and CEMS (The Global Alliance in Management Education), and participates in the Erasmus+ program.



Forty-two of our 2022 MSc graduates who participated in the survey also studied abroad for at least one semester (excluding those who enrolled in a double degree program).



# MSc ALUMNI WITH A DOUBLE DEGREE

We have joined forces with some of the very best European business schools and offer exciting double degree programs with the University of St Gallen, Bocconi University and Sciences Po (the Paris School of International Affairs and the School of Management and Innovation) on the Master level.

The combined strengths of the partner university and SSE enhance the academic experience and equip students with international experience and perspectives that help prepare them for successful careers, whether in business, government or academia.

Graduates of a double degree program receive two degrees, one from each higher education institution, which give them an edge in the increasingly integrated European labor market.



7

Seven of our 2022 MSc graduates who participated in the survey were enrolled in one of the double degree programs and were awarded with two Master's degrees.

# MSc ALUMNI WITH AN ADDITIONAL CEMS MIM DEGREE

The CEMS Master in International Management (MIM) is a joint Master program offered by a global alliance of leading business schools, multinational companies and NGOs that have come together to offer one of the top-ranked Master programs in management globally. The CEMS MIM is a compelling choice for those seeking a truly versatile and geographically mobile international career, as the joint curriculum is co-created and refined by faculty academic directors from 34 member schools, with input from its 70+ CEMS corporate partners, 8 social partners, as well as CEMS students and alumni. SSE is the only school in Sweden that is a member of CEMS and has one of the largest student cohorts among CEMS schools.

The CEMS MIM program consists of mandatory elements, such as an initial one-week block seminar, traditional courses in international business, a business project, an academic semester abroad, skills seminars and language requirements. Upon completing the program, students will be awarded with both the CEMS MIM degree and a Master of Science degree from SSE.

46

Forty-six of our 2022 MSc graduates who participated in the survey also obtained a Master's degree from CEMS.



# EMBRACE YOUR UNIQUENESS

## AT SSE, YOU CAN CREATE A CURRICULUM THAT NURTURES YOUR INDIVIDUAL NEEDS

SSE's Master students have various opportunities to enhance their education and gain valuable experiences. In addition to studying at one of SSE's partner schools, enrolling in a double degree program or joining the CEMS community, students can follow a track in sustainability or data analytics. They also have the option to select elective courses related to innovation at the Stockholm School of Entrepreneurship. Furthermore, students can engage in the Executive Trainee Module (XTM), in which case they will work closely with an executive manager at one of SSE's partner companies. Another option is to participate in the Wallenberg International Fellows program, which allows students to combine their MSc studies at SSE with a summer internship in the United States, along with international business diplomacy studies in the Landegger Program at Georgetown University.



Scan the QR code to read more about all MSc program components in year 2



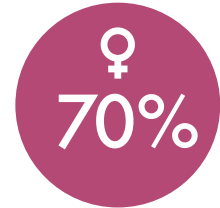
# SSE BUSINESS LAB

## THE STARTUP INCUBATOR OF SSE

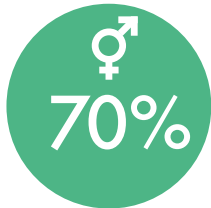


SEK 48 million raised by the startups

SSE Business Lab is the startup incubator of the SSE. The incubator is an integrated part of SSE that encourages entrepreneurship among students, alumni and faculty and provides early-stage support for companies that have at least one co-founder with a connection to SSE. Through coaching, mentorship, workshops, and access to a first-class network of investors, SSE Business Lab helps startups develop their ideas, accelerate their growth, and create impact. The incubator provides access to a wide variety of partner offers from organizations like Microsoft for Startups, Scrive, PE Accounting, and Stockholms Grosshandelssocietet. Since its inception in 2001, SSE Business Lab has supported over 260 companies – among them well-known successes like Klarna, Budbee and Voi Technology.

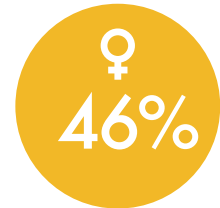


Of the capital raised, 70% went to startups with female CEOs



Of the capital raised, 70% went to mixed-gender teams

SSE Business Lab offers support to entrepreneurs and startups through three programs: IDEATE, an inspirational program for students at SSE and KTH who are interested in building sustainable businesses; ACTIVATE, an intensive program for teams seeking to validate their business ideas; and INCUBATE, a six-to-18-month long incubation program for startups with a scalable product or service and international business potential.



Of the private investors in SSE's new venture fund, 46% are women.

# ABOUT LAMIN K. DARBOE AND BANTABA

Lamin Darboe is originally from Gambia in West Africa and took his MSc in Finance at SSE. Prior to enrolling at SSE, he received his bachelor's degree from Bocconi University in Italy. In 2021, he co-founded Bantaba, a startup that seeks to contribute to the development in Africa by supporting entrepreneurs addressing important challenges on the continent. Bantaba received support from SSE Business Lab, first in the Activate program for early-stage ideas, and later in the Incubate program for startups scaling their business idea.

Bantaba connects African tech startups to investors, mentors and consultants in the African diaspora. The platform allows the diaspora to contribute to Africa's tech ecosystem through networking, mentoring, and investing in startups on the continent.



"The team at SSE Business Lab has been nothing short of incredible, being our number 1 supporter. They have always gone the extra mile to support our journey, providing access to business coaches, mentors, and investors as well as giving feedback, recommendations and tips. Over the past year, we have been able to build and grow as a company thanks to the lab's resources."



**Lamin Darboe**  
Co-founder of Bantaba, Gambia

# FIRST EMPLOYERS AFTER GRADUATION

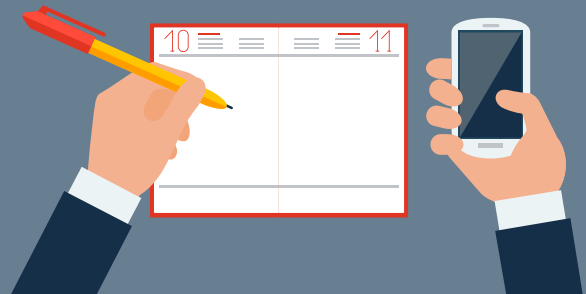
NEARLY 50% (114) OF THE EMPLOYED MSC ALUMNI ARE WORKING IN  
SSE'S AND CEMS' CORPORATE PARTNER COMPANIES

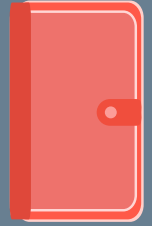


ACCENTURE  
AXEL JOHNSON  
BAIN & COMPANY  
BCG  
BNP PARIBAS  
CAPGEMINI INVENT  
CARNEGIE  
CITIGROUP  
DELOITTE  
EF

EQT PARTNERS  
EY  
GARTNER  
GOLDMAN SACHS  
HANDELSBANKEN  
H&M  
KEARNEY  
KINNEVIK  
KPMG  
MASTERCARD

MCKINSEY & COMPANY  
MORGAN STANLEY  
NORDANÖ PARTNERS  
PWC  
P&G  
SCANIA  
SEB  
SÖDERBERG & PARTNERS  
UBS  
VATTENFALL





## EXAMPLES OF OTHER EMPLOYERS

---

AMAZON

ARKWRIGHT

BANK OF AMERICA

MERRILL LYNCH

BARCLAYS

BIONTECH

ERICSSON

J.P. MORGAN

KNOWIT

MICROSOFT

NORTHVOLT

ROLAND BERGER

SCHIBSTED

SIEMENS

SPOTIFY

SWEDBANK

UNILEVER

UNIVERSITY OF OXFORD

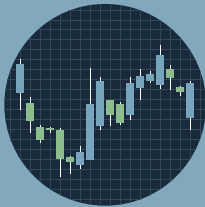


# CHOICE OF SECTOR

The companies where our alumni work belong to the following sectors:



49% Consultancy



22% Finance



7% Technology/  
Telecoms



4% Public Sector



3% Education



3% FinTech



3% Media/Marketing



2% Energy/Utilities



2% Industrial



1% Retail



1% Consumer Products



3% Other



# PROGRAM PORTFOLIO

## MASTER OF SCIENCE PROGRAMS

<b>MASTER OF SCIENCE PROGRAMS (2 YEARS)</b>	Accounting, Valuation & Financial Management
	Business & Management
	Economics
	Finance
	International Business

## PROGRAMS OFFERED AT SSE

**BACHELOR OF SCIENCE PROGRAMS  
(3 YEARS)**

Business & Economics

Retail Management

## MASTER OF SCIENCE PROGRAMS

**PhD PROGRAMS  
(5 YEARS)**

Business Administration

Economics

Finance

**MBA EXECUTIVE FORMAT (18 MONTHS)**

**EXECUTIVE EDUCATION**

# WHAT EMPLOYERS THINK

"We are proud of our close partnership with SSE. In our search for exceptional talent, SSE students continue to be distinctive. They exhibit high levels of drive and engagement, qualities that are crucial in our work to solve some of the world's most complex problems. We have decades of history of learning, growing, and unleashing our potential together."

**Sebastian Sjöberg**  
Managing Partner and Senior Partner at McKinsey – Sweden

McKinsey  
& Company

"BCG has a long history of meeting and employing talent from SSE, and we continue to be impressed by the knowledge and skills that they bring to their work. But what makes them unique is their entrepreneurial spirit, willingness to drive change and attitude of everything is possible. We are looking forward to meeting the next generation of SSE graduates at BCG!"

**Christina Synnergren**  
Managing Director & Senior Partner at Boston Consulting Group, SSE alum

BCG

"We are recruiting from SSE simply because it's the perfect match. We are getting access to hard working, curious and creative students of world class, and in return we offer them a truly global platform to develop their skill set and accelerate their careers as working professionals."

**Per Hillström**  
Managing Director at Morgan Stanley

Morgan Stanley

# WHAT ALUMNI THINK

"Don't be afraid to stray from the beaten path. During my time as a student, I was completely unaware of many of the career opportunities I see now. There is much to be explored and many alternative career paths that don't follow a straight line."

**Johanna Modigsson**

Economic and Financial Affairs Counsellor at the Delegation of Sweden to the OECD and UNESCO, France



"I feel like SSE prepared me very well for my role at BCG. Aside from the classes and actual content, I benefitted most from the many touchpoints with corporate partners, the intense group projects that were in many ways similar to the work I do now, and above all, the vibrant student body of driven people. I really enjoyed and benefitted from being surrounded by ambitious people that were helping each other achieve their career goals."

**Michael Stalder**

Consultant at Boston Consulting Group in Stockholm, Sweden



"The courses that really shaped my career decisions were Development Economics and Behavioral Economics. The lecturers provided several case studies that evaluated different public policy experiments or approaches in order to improve the life of citizens. In class we had endless discussions on how to make policies smarter and more intuitive and functional, and I liked the idea and knowledge that smart policies can be of great help to many people. With that in mind, I decided to pursue a career at the Ministry of Finance."

**Veronika Horváthová**

Analyst at the Ministry of Finance, Slovakia



# STOCKHOLM SCHOOL OF ECONOMICS

---

SSE is one of Europe's leading business schools, with a unique business-community network. Its research is internationally recognized, and many of its researchers are among the leading figures in their respective fields.

SSE's mission dates back to 1909, and it is to strengthen Sweden's competitiveness through research and science-based education. To execute this mission, SSE operates with core values that ultimately prepare decision makers, today and in the future, for approaching the world with curiosity and confidence and acting freely in relation to the unknown. In practice, SSE's operations embody a Fact and science-based mindset, Empathy and cultural literacy, Reflection and self-awareness, and Entrepreneurship. In a word, SSE aims to be a FREE Business School and as such impactful for all of its stakeholders, locally, nationally, and globally.



Stockholm School of Economics · Box 6501 · SE-113 83 Stockholm, Sweden  
Phone: +46 8 736 90 00 · [info@hhs.se](mailto:info@hhs.se) · [www.hhs.se](http://www.hhs.se)