

**BSc**

BACHELOR OF SCIENCE PROGRAMS

# EMPLOYMENT REPORT 2024



# INTRODUCTION

As we navigate today's rapidly evolving world, we face unprecedented challenges and opportunities across the global landscape, influenced by technological advancements, economic shifts, and societal changes. These developments demand that we, as alumni, adapt, innovate, and lead with the skills we've gained during our academic and professional journeys. Our capacity to apply these skills to new problems, to think critically, and to collaborate across cultures is more crucial than ever.

Reflecting on my time at the Stockholm School of Economics, I cherish not only the rigorous academic training but also the nurturing environment that equipped me for challenges beyond the classroom. The school served as a crucible for developing both technical knowledge and essential soft skills such as leadership, teamwork, and moral judgment. These skills have been indispensable throughout my career. Since graduating,

I've embraced roles that have maximized my potential and passion: I've worked at multinational corporations, as well as started EsterCare – a mission-driven company dedicated to increasing gender equality in our society.



**Lydia Graf Lund**, Co-Founder and CEO of the femtech company EsterCare

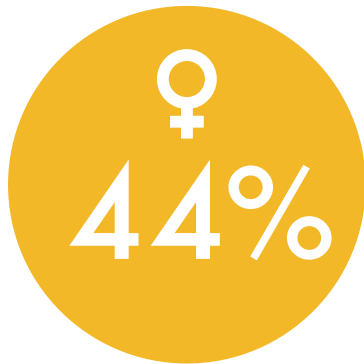
The perspectives I've gained from these different roles have enabled me to both develop my strategic thinking and personal development, allowing me to understand in what context my passions and skills will make the best contribution to the world.

SSE graduates are highly valued in the job market. The combination of practical, hands-on learning experiences and a solid theoretical foundation ensures that both Bachelor and Master students are not only prepared to tackle current professional challenges, but are also well-equipped to shape the future.

The personal attention each student receives at the Stockholm School of Economics truly transforms the educational experience. Faculty members know us by name, recognizing each student as an individual with unique talents and potential. This approach boosts motivation and engagement, enriching both our academic and personal growth. As an alum, I strive to carry forward this legacy of personal attention, continuously working to forge meaningful connections in my professional and personal life, and underscoring the lifelong impact of our alma mater.

# GRADUATE PROFILE

324 alumni graduated from SSE's Bachelor programs in 2023. They included 44 percent women and 56 percent men. The median age at graduation was 23. Twenty nationalities were represented, including Swedish (some of these were Swedish alumni with dual citizenship)



## NATIONALITIES REPRESENTED IN THE BACHELOR COHORT THAT GRADUATED IN 2023

American, Australian, Brazilian, British, Chinese, Croatian, Danish, Finnish, French, German, Hungarian, Indian, Italian, Japanese, Latvian, Montenegrin, Norwegian, Swedish, Swiss, Syrian.

# BSc ALUMNI WHO WENT ON EXCHANGE

SSE runs an extensive student exchange program with about 100 top-ranked universities and business schools all around the world. SSE is also a member of CIVICA, and participates in the Erasmus+ program.



A Total of 148 of our 2023 BSc graduates studied abroad for one semester.

Read more  
about the student  
exchange program.



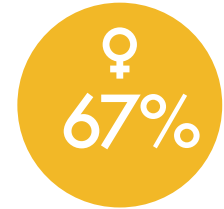
# SSE BUSINESS LAB

## A WORLD-CLASS STARTUP INCUBATOR



#1 track record in Europe according to the Financial Times

Since its inception in 2001, SSE Business Lab has supported over 300 companies – among them well-known successes like Klarna, Budbee and Voi Technology. The Financial Times ranks SSE Business Lab as the startup incubator with the best track record in Europe, in addition to being the #1 incubator in Sweden.



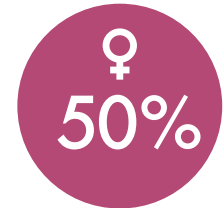
Of the teams admitted in 2023, 67% had at least one female co-founder

SSE Business Lab is an integrated part of the School that encourages entrepreneurship among students, alumni and faculty and provides early-stage support for companies that have at least one co-founder with a connection to SSE. Through coaching, mentorship, workshops, and access to a first-class network of investors, SSE Business Lab helps startups develop their ideas, accelerate their growth, and create impact.



SEK 31 million raised by the startups

SSE Business Lab offers support to entrepreneurs and startups through three programs: IDEATE; an inspirational program for students at SSE and KTH who are interested in building sustainable businesses, ACTIVATE; an intensive program for teams seeking to validate their business idea, and INCUBATE; a six-to-18-month long incubation program for startups with a scalable product or service and international business potential.



Of the capital raised, 50% went to startups with female CEOs

# ABOUT LOVISA QVARNER AND DIBZ

Lovisa attended the BSc program in Business & Economics from 2017 to 2020. Towards the end of her studies, she founded Dibz together with two friends from KTH Royal Institute of Technology. As they were all coming from smaller cities, they were frustrated by the complexity of housing queues in Stockholm and wanted to create a simpler solution for people looking for accommodation.

Dibz is a platform that allows you to keep track of all your housing queues and points in a single place. The platform seeks to help its users plan their future and maximize their opportunities with just a couple of clicks. As a platform that democratizes access to information, Dibz aims to promote social inclusion by making it easier for everyone to navigate the complex housing market in Sweden.

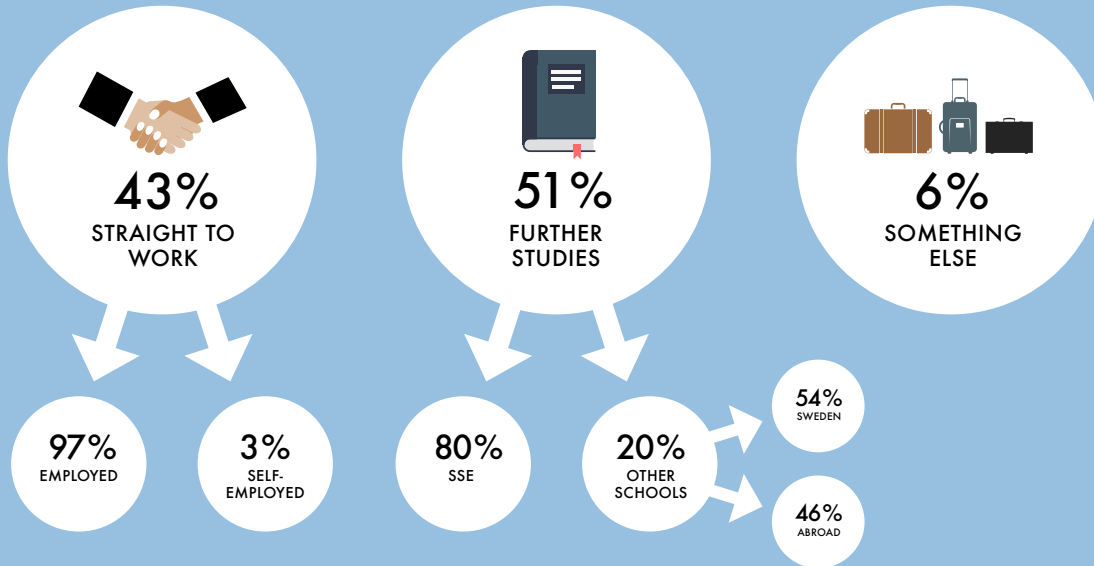
“The community of entrepreneurs, advisors and investors at SSE Business Lab was invaluable for us when we created Dibz. The support from the Lab helped us meet our challenges head on and grow our startup fast. I recommend the programs to all entrepreneurial students!”



**Lovisa Qvarner**  
Co-founder of Dibz

# WHAT COMES NEXT

In the spring of 2024, the 324 alumni who graduated from SSE's Bachelor programs in 2023 were surveyed about their whereabouts, employment situation and remuneration. 235 of the invited alumni responded to the survey. Their answers are summarized on the following pages. Note that not every respondent completed every question. To calculate the % values, we have used the number of usable responses to each question as the total. Likewise, when we refer to "alumni" on the following pages, we refer to the group of alumni who answered the respective survey question and not the entire cohort that graduated in 2023. Information on company sectors was reviewed by the project team and standardized based on the Financial Times grouping.



Forty-three percent of alumni who disclosed their employment status reported that they began their careers after finishing their degree. Fifty-one percent decided to continue their studies. The remaining six percent reported doing something else.

# GRADUATES WERE HIRED QUICKLY

Of the alumni who told us that they went straight to work and disclosed their time to employment, 93 percent found employment within three months of completing their studies. The remaining seven percent include alumni who chose not to look for a job immediately after graduation.

# 93%

found employment within three months  
of completing their studies.

Of those who found employment within three months of completing their studies, 74 percent found positions before they completed their studies.

## ANNUAL REMUNERATION

One year after completing their studies, employed alumni\* earned an average annual gross remuneration of USD 58,744 or SEK 609,514. This figure includes bonuses and commissions.

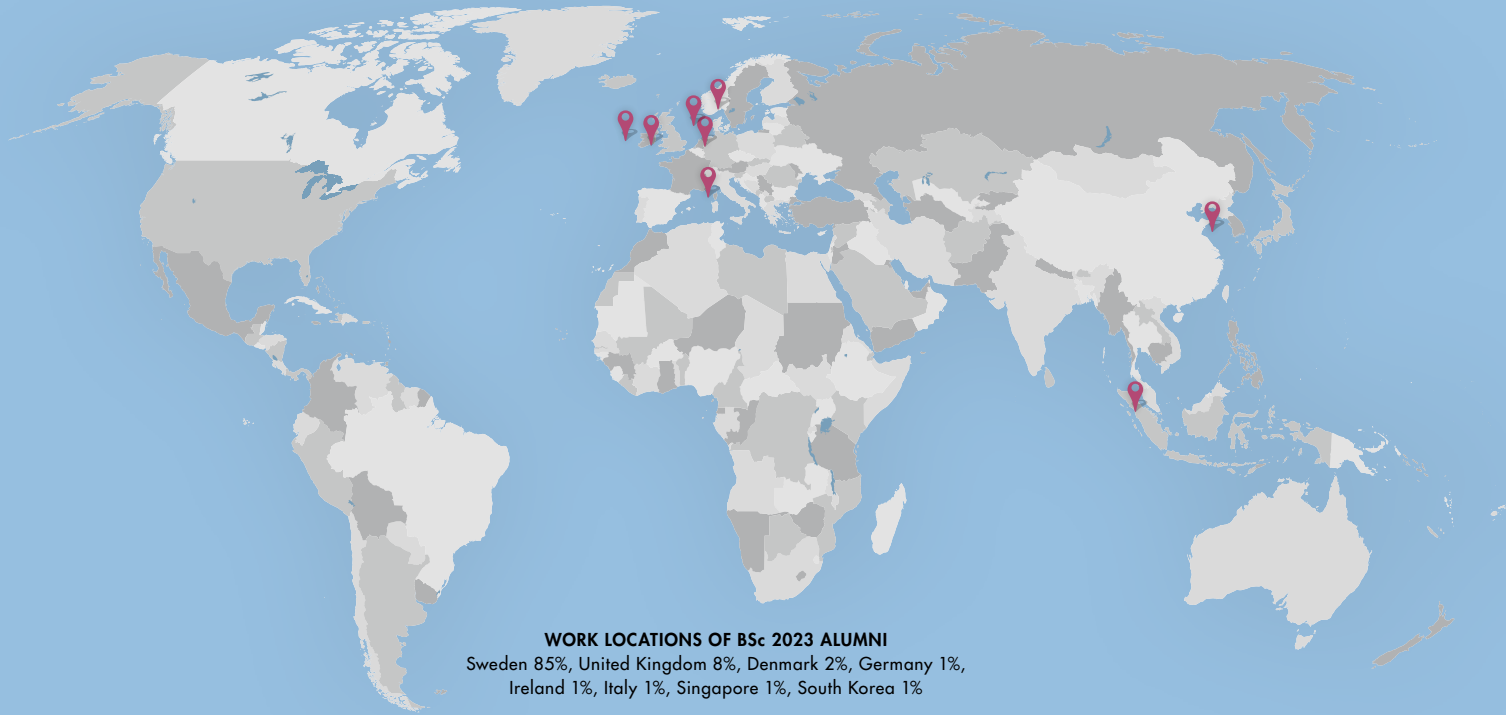


\*Salary information was reported by alumni in USD. USD was converted to SEK at the Riksbank's exchange rate on June 7, 2024; USD 1 = SEK 10.37576. Outliers were excluded from this analysis.



# GRADUATES' DESTINATIONS

85% of alumni who disclosed their current location work in Sweden, and 13% in other European countries. The United Kingdom was the most popular destination. 2% are located in Singapore and South Korea. Of those located in Sweden, 11% are international.



# FIRST EMPLOYERS AFTER GRADUATION

38% (36) OF 96 EMPLOYED ALUMNI ARE WORKING IN SSE'S AND CEMS' CORPORATE PARTNER COMPANIES

## CORPORATE PARTNERS:

AURA GROUP	H&M*
BCG*	KPMG
BNP PARIBAS*	LAZARD
CEVIAN CAPITAL	LIDL
CITIBANK	MCKINSEY & COMPANY*
EF EDUCATION FIRST	MORGAN STANLEY
EY	P&G
GOOGLE	PWC
GOLDMAN SACHS	ROTHSCHILD & CO
GRANT THORNTON	

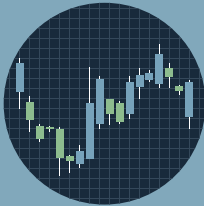
## OTHER COMPANIES INCLUDE:

ABG SUNDAL COLLIER	KREDO HOLDINGS
ALLSHARES	NAVIGIO
ARC CONSULTING	OAKLINS SWEDEN
ARLA FOODS	PE ACCOUNTING
BARCLAYS	REDEYE
DELL	SSAB
EVLI	STRATSYS
HUI RESEARCH	VATTENFALL
KEPLER CHEUVREUX	VERDANE

\* Both SSE & CEMS Corporate Partners

# CHOICE OF SECTOR

The companies where our alumni work belong to the following sectors:



38% Finance



35% Consultancy



8% Retail



5% Technology/  
Telecoms



5% Consumer Products



4% Energy/Utilities



2% Education



3% Other

# WHAT EMPLOYERS THINK

"Over the years, SSE has provided us with many top talents who have grown and evolved into great leaders within H&M. Interaction with students through real business cases and projects has given us numerous new insights and ideas on how to improve and been a great way for us to build relationships with talented people from an early stage."

**Daniel Ervér**  
CEO H&M Group  
Sweden



"We are thrilled to join forces with the Stockholm School of Economics in nurturing the next generation of business leaders and innovators. At Lidl, we believe in the power of education and collaboration to drive positive change and innovation in the retail industry. Through this partnership, we look forward to sharing our knowledge and resources with the students and faculty at the Stockholm School of Economics."

**Carin Årvik**  
Senior Director HR at Lidl Sverige KB



"We are proud of our close partnership with SSE. In our search for exceptional talent, SSE students continue to be distinctive. They exhibit high levels of drive and engagement, qualities that are crucial in our work to solve some of the world's most complex problems. We have decades of history of learning, growing, and unleashing our potential together."

**Sebastian Sjöberg**  
Managing Partner and Senior Partner at McKinsey – Sweden

**McKinsey  
& Company**

# WHAT ALUMNI THINK

"An education from SSE gives you an analytical toolbox that is valuable no matter in what type of career you end up. By learning the basics of a broad range of topics in business and economics, combined with the opportunity to specialize during the third year of the bachelor's program or during the master program's, the knowledge you gain is both deep and wide – all in a setting that is highly intellectually stimulating."

**David Hakula**, Speechwriter and Economic Policy Advisor to the Leader of the Opposition, Swedish Parliament in Stockholm, Sweden



"SSE will provide you with extremely valuable opportunities to meet companies and potential employers over the years, which will truly strengthen your opportunities to have an exciting career after graduating. I wanted to combine business strategy with my interest for societal matters and sustainability and now I am working with something I feel strongly about which is truly rewarding."

**Johanna Lundgren Gestlöf**,  
Head of Sustainability  
at Swedish pension  
provider SPP,  
Sweden

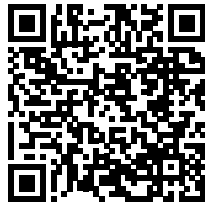


"Originally from Mexico, I had a background in Art History but I wanted to study something more practical to sharpen my skill set. SSE provided me with a holistic perspective on how businesses operate and how to manage them, covering everything from finance to marketing. SSE played a big role in my ambition to make the fashion industry more sustainable. People at SSE are eager to help you succeed, from your fellow classmates to the extensive corporate and alumni network."

**Paula Vega Tagle**  
Founding Partner fo Iablanco, and General Manager for Publish-for, China



Meet more  
of our graduates



# PROGRAM PORTFOLIO

## BACHELOR OF SCIENCE PROGRAMS

**BACHELOR OF  
SCIENCE PROGRAMS  
(3 YEARS)**

Business & Economics

Retail Management

## PROGRAMS OFFERED AT SSE

### BACHELOR OF SCIENCE PROGRAMS

**MASTER OF  
SCIENCE  
PROGRAMS  
(2 YEARS)**

Accounting, Valuation &  
Financial Management

Business & Management

Economics

Finance

International Business

**PhD  
PROGRAMS  
(5 YEARS)**

Business Administration

Economics

Finance

**MBA EXECUTIVE FORMAT (18 MONTHS)**

**EXECUTIVE EDUCATION**

# STOCKHOLM SCHOOL OF ECONOMICS

---

SSE is one of Europe's leading business schools, with a unique business-community network. Its research is internationally recognized, and many of its researchers are among the leading figures in their respective fields.

SSE's mission dates back to 1909, and it is to strengthen Sweden's competitiveness through research and science-based education. To execute this mission, SSE operates with core values that ultimately prepare decision makers, today and in the future, for approaching the world with curiosity and confidence and acting freely in relation to the unknown. In practice, SSE's operations embody a Fact and science-based mindset, Reflection and self-awareness, Empathy and cultural literacy, and Entrepreneurship. In a word, SSE aims to be a FREE Business School and as such impactful for all of its stakeholders, locally, nationally, and globally.



Stockholm School of Economics · Box 6501 · SE-113 83 Stockholm, Sweden  
Phone: +46 8 736 90 00 · [info@hhs.se](mailto:info@hhs.se) · [www.hhs.se](http://www.hhs.se)



Photo: Jiliana Wiklund